

Christoff Building

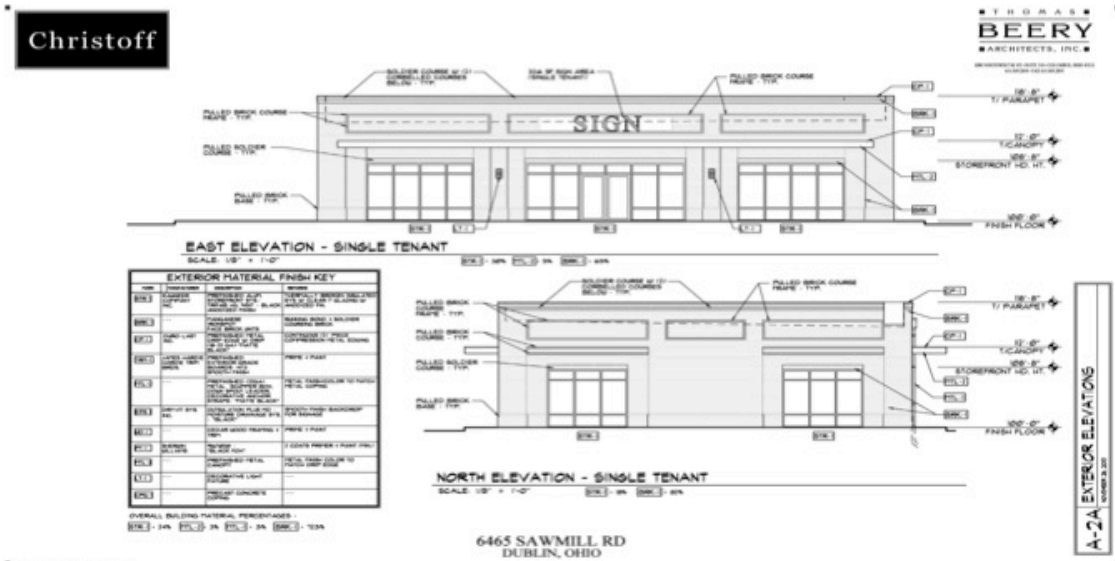
Dublin Bridge Street Corridor (BSC) Sawmill District

6465 Sawmill Road

Dublin, Ohio 43017 (Franklin County)

6465 Sawmill Road - Retail Building

Dublin, Ohio



Minor Project – Review Submittal

Architect

Tom Beery RA, LEED AP
Thomas Beery Architects, Inc.

General Contractor

Mike Kochovski
Kochovski Construction, LLC

Project Manager & Developer

Christoff

Civil Engineer

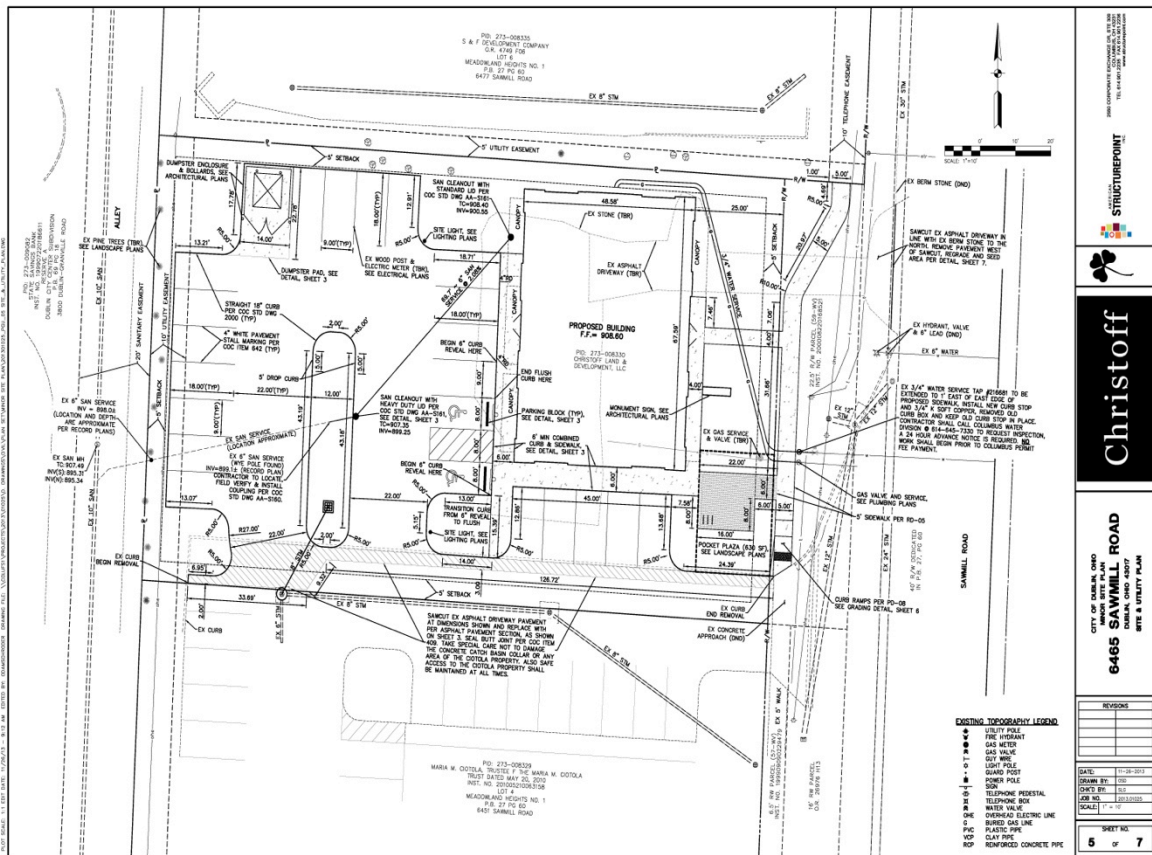
Shawn L. Goodwin, PE
American Structurepoint, Inc.

Landscape Design

Todd Foley
POD design

6465 Sawmill Rd.

Preliminary Site Plan



6465 Sawmill Rd.

Sky View



Christoff

102 W. Main St
Suite 507
New Albany, Ohio 43054
614 304-1078